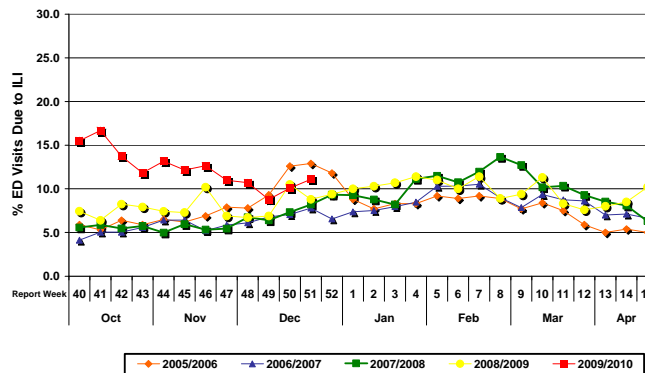


# Influenza Season 2009/10 – Riverside County, California

## Influenza Surveillance Weekly Update

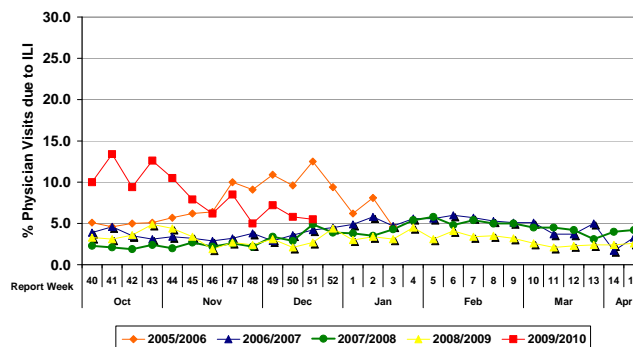
### Week ending December 26, 2009

Percent of Emergency Department (ED) Visits Due to Influenza-Like Illness (ILI), Riverside County: 2009/10 Influenza Season



During week 51, 11.1% of visits to Riverside County emergency departments were related to influenza-like illnesses. Compared to historical data, this is within normal limits.

Percent of Total Visits at Physician Sentinel Sites due to Influenza-like Illness (ILI), Riverside County: 2009/10 Influenza Season



During week 51, 5.5% of visits to physician sentinel sites were related to influenza-like illnesses. Compared to historical data, this is slightly above normal limits.

**Deaths due to Pneumonia and Influenza:** During week 51, 5.6% of deaths were due, in part, to pneumonia/influenza. Compared to the same week last year (7.6%), this is within normal limits.

**School Absenteeism:** No Data Available.

**State Influenza Activity:** As of week 50\*, influenza activity in California remained widespread. Most indicators suggest that illness may be declining, with levels of illness approaching normal range for this time of year. Reported cases of new hospitalizations decreased from 248 cases last week to 209 cases this week. As with previous weeks, the rate of hospitalizations remains highest among children under one year of age. The number of fatalities reported to CDPH increased from 20 cases last week to 32 this week.

\*Data reporting delayed one week.

**National Influenza Activity:** As of week 50\*, influenza activity in the United States continued to decrease. The proportion of outpatient visits for influenza-like illness (ILI) was 2.3%, which is equal to national baseline of 2.3%. The proportion of deaths nationwide attributed to pneumonia and influenza (P&I) was below the epidemic threshold. All subtyped influenza A viruses were 2009 influenza A (H1N1) viruses.

#### Additional Resources

Riverside County Influenza Vaccine Locations:  
 State of California Influenza Information:  
 United States Influenza Information:

Call 211 or 1-800-464-1123 or visit <http://www.rivcoph.org/>  
<http://www.dhs.ca.gov/ps/dcdc/vrdl/html/flu/fluintro.htm>  
<http://www.cdc.gov/ncidod/diseases/flu/weekly.htm>

**Epidemiology and Program Evaluation (951) 358-5557**  
**Department of Public Health / Riverside County Community Health Agency**  
<http://www.rivcohealthdata.org/home/index.htm>