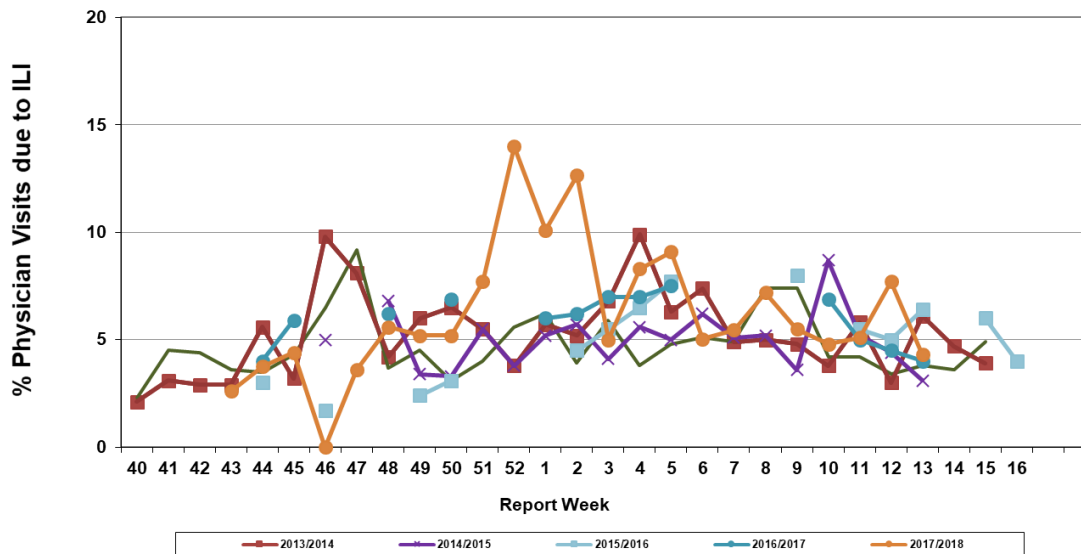


# Influenza Season 2017/2018 – Riverside County, California

## Influenza Surveillance Weekly Update

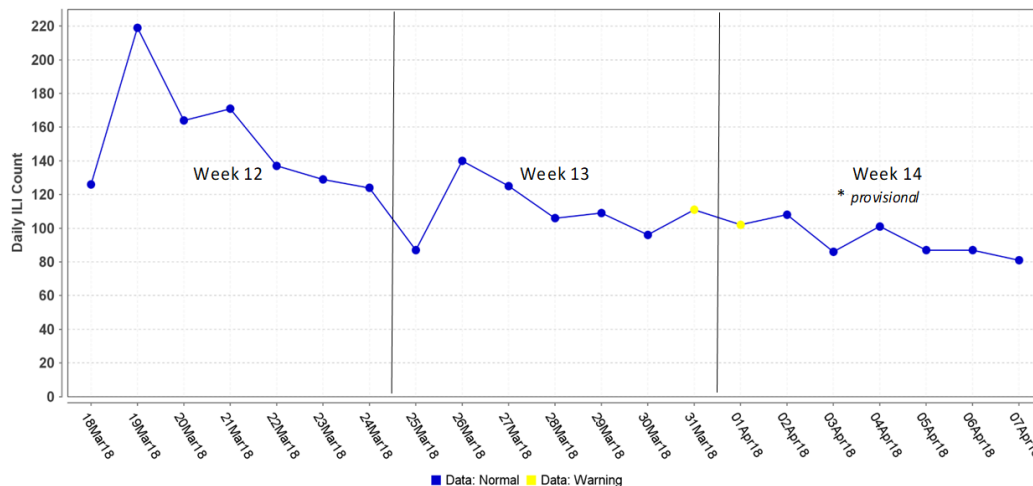
### Week ending April 14, 2018

**Percent of Total Visits at Physician Sentinel Sites  
due to Influenza-like Illness (ILI),  
Riverside County: 2017/2018 Influenza Season**



During week 13\*\*, 4.3% of visits to physician sentinel sites were related to influenza-like illnesses. Compared to historical data, this is within normal limits.

**Total Emergency Dept Visits Due to ILI (March 18 - April 7, 2018)**



Hospital surveillance system triggers alerts due to unusually high influenza-like illness visits. During week 14\* ED visits were within normal limits.

**Deaths due to Pneumonia and Influenza:** During week 14\*, 6.9% of deaths were due, in part, to pneumonia or influenza. Compared to historical data, this is within normal limits.

**School Absenteeism:** During week 14\*, 8.1% of students at sentinel school sites were absent due to illness. Compared to historical data, this is below normal limits.

**State Influenza Activity:** During week 13\*\*, overall influenza activity was “Widespread” in California. Based on available data from 72 enrolled sentinel providers, the percentage of visits for ILI in week 13\*\* (2.7%) is above expected baseline levels for this time of year. Eleven laboratory-confirmed influenza-associated deaths in adults less than 65 years of age were reported during Week 13\*\*. Twelve laboratory-confirmed influenza outbreaks were reported.

---

**National Influenza Activity:** During week 13\*\*, influenza activity decreased in the United States. The proportion of outpatient visits for influenza-like illness (ILI) was 2.4%, which is above the national baseline of 2.2%. Seven of 10 regions reported ILI at or above region-specific baseline levels. Two states experienced high ILI activity; eight states experienced moderate ILI activity; New York City and 12 states experienced low ILI activity; Puerto Rico, the District of Columbia and 28 states experienced minimal ILI activity. The geographic spread of influenza in 11 states was reported as widespread; Guam, Puerto Rico and 26 states reported regional activity; the District of Columbia and ten states reported local activity; and the U.S. Virgin Islands and three states reported sporadic activity. During week 11\*\*, 7.1% of all deaths reported through the National Center for Health Statistics (NCHS) were due to P&I. This percentage is above the epidemic threshold of 7.3% for week 11\*\*. Five influenza associated pediatric death was reported.

\*Reporting delayed one week

\*\* Reporting delayed several weeks

### **Additional Resources**

Riverside County Influenza Information:

<http://www.rivco-diseasecontrol.org/Services/InfluenzaInformation.aspx>

State of California Influenza Information:

<https://www.cdph.ca.gov/Programs/CID/DCDC/Pages/Immunization/Influenza.aspx>

United States Influenza Information:

<https://www.cdc.gov/flu/weekly/pastreports.htm>



County of Riverside Department of Public Health

<http://www.rivcohealthdata.org> (951) 358-5557