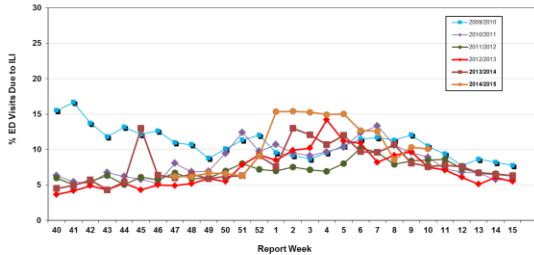


Influenza Season 2014/2015 – Riverside County, California

Influenza Surveillance Weekly Update

Week ending March 14, 2015

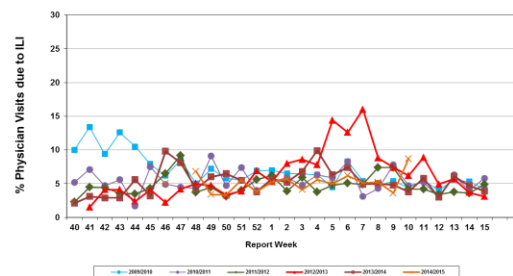
Percent of Emergency Department (ED) Visits due to Influenza-Like Illness (ILI), Riverside County: 2014/2015 Influenza Season



During week 10, 10.1% of visits to Riverside County emergency departments were related to influenza-like illnesses. Compared to historical data, this is within normal limits.

During week 10, 8.7% of visits to physician sentinel sites were related to influenza-like illnesses. Compared to historical data, this is above normal limits.

Percent of Total Visits at Physician Sentinel Sites due to Influenza-like Illness (ILI), Riverside County: 2014/2015 Influenza Season



Deaths due to Pneumonia and Influenza: During week 10, 6.0% of deaths were due, in part, to pneumonia or influenza. Compared to historical data, this is below normal limits.

School Absenteeism: During week 10, 14.9 % of students at sentinel school sites were absent due to illness. Compared to historical data, this is slightly above normal limits.

State Influenza Activity: During week 10, overall influenza activity was “regional” in California. Based on available data from 84 enrolled sentinel providers, the percentage of visits for ILI in week 10 (2.3%) does not exceed the epidemic threshold for this time of year. One influenza-associated death in adults less than 65 years of age was reported during Week 10. 18 laboratory-confirmed influenza outbreaks were reported.

National Influenza Activity: During week 10, influenza activity decreased, but remained elevated in the United States. The proportion of outpatient visits for influenza-like illness (ILI) was 2.3%, which is above the national baseline of 2.0%. Eight regions reported ILI at or above region-specific baseline levels. Puerto Rico and four states experienced high ILI activity; six states experienced moderate ILI activity; six states experienced low ILI activity; New York City and 34 states experienced minimal ILI activity; the District of Columbia and one state reported sporadic. The geographic spread of influenza in nine states was reported as widespread; Guam and 29 states reported regional activity; Puerto Rico and 13 states reported local activity; and the District of Columbia and one state reported sporadic activity; and the U.S. Virgin Islands did not report. During week 10, 7.6% of all deaths reported through the 122 Cities Mortality Reporting System were due to P&I. This percentage was above the epidemic threshold of 7.2% for week 10. Three influenza-associated pediatric deaths were reported.

Additional Resources

Riverside County Influenza Information:
 State of California Influenza Information:
 United States Influenza Information:

<http://www.rivco-diseasecontrol.org/Services/InfluenzaInformation.aspx>
[http://www.cdph.ca.gov/healthinfo/discond/Pages/Influenza\(Flu\).aspx](http://www.cdph.ca.gov/healthinfo/discond/Pages/Influenza(Flu).aspx)
<http://www.cdc.gov/ncidod/diseases/flu/weekly.htm>

Epidemiology and Program Evaluation
 County of Riverside Department of Public Health
<http://www.rivcohealthdata.org>
 (951) 358-5557

