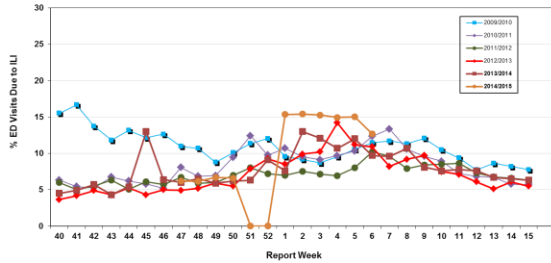


Influenza Season 2014/2015 – Riverside County, California

Influenza Surveillance Weekly Update

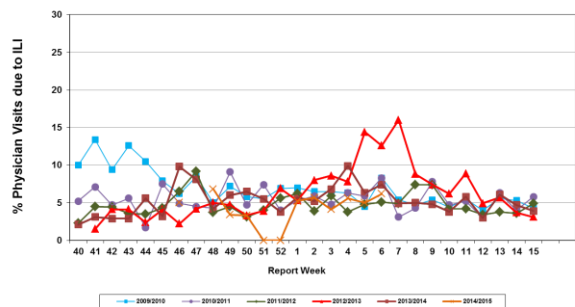
Week ending February 14, 2015

Percent of Emergency Department (ED) Visits due to Influenza-Like Illness (ILI), Riverside County: 2014/2015 Influenza Season



During week 6, 12.7% of visits to Riverside County emergency departments were related to influenza-like illnesses. Compared to historical data, this is slightly above normal limits.

Percent of Total Visits at Physician Sentinel Sites due to influenza-like Illness (ILI), Riverside County: 2014/2015 Influenza Season



During week 6, 6.2% of visits to physician sentinel sites were related to influenza-like illnesses. Compared to historical data, this is within normal limits.

Deaths due to Pneumonia and Influenza: During week 6, 6.6 % of deaths were due, in part, to pneumonia or influenza. Compared to historical data, this is within normal limits.

School Absenteeism: During week 6, 8.0% of students at sentinel school sites were absent due to illness. Compared to historical data, this is within normal limits.

State Influenza Activity: During week 5*, overall influenza activity was “widespread” in California. Based on available data from 117 enrolled sentinel providers, the percentage of visits for ILI in week 5* (4.7%) exceeds the epidemic threshold (3.8%) for this time of year. Seven influenza-associated deaths in adults less than 65 years of age were reported during Week 5*. Thirty-Two laboratory-confirmed influenza outbreaks were reported.

National Influenza Activity: During week 5*, influenza activity decreased, but remained elevated in the United States. The proportion of outpatient visits for influenza-like illness (ILI) was 3.8%, which is above the national baseline of 2.0%. All 10 regions reported ILI at or above region-specific baseline levels. Puerto Rico and 15 states experienced high ILI activity; New York City and 15 states experienced moderate ILI activity; eight states experienced low ILI activity; 12 states experienced minimal ILI activity; and the District of Columbia had insufficient data. The geographic spread of influenza in Puerto Rico and 32 states was reported as widespread; Guam, the U.S. Virgin Islands and 16 states reported regional activity; and the District of Columbia and two state reported local activity. During week 5*, 8.1% of all deaths reported through the 122 Cities Mortality Reporting System were due to P&I. This percentage was above the epidemic threshold of 7.2% for week 5*. Eleven influenza-associated pediatric deaths were reported. * Reporting delayed one week

Additional Resources

Riverside County Influenza Information:
 State of California Influenza Information:
 United States Influenza Information:

<http://www.rivco-diseasecontrol.org/Services/InfluenzaInformation.aspx>
[http://www.cdph.ca.gov/healthinfo/discond/Pages/Influenza\(Flu\).aspx](http://www.cdph.ca.gov/healthinfo/discond/Pages/Influenza(Flu).aspx)
<http://www.cdc.gov/ncidod/diseases/flu/weekly.htm>

Epidemiology and Program Evaluation
 County of Riverside Department of Public Health
<http://www.rivcohealthdata.org>
 (951) 358-5557

