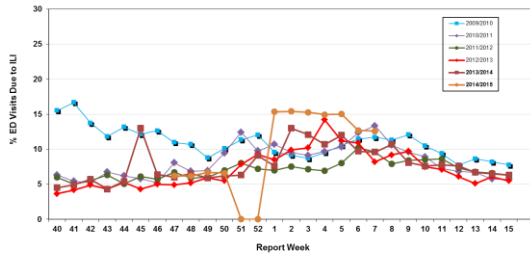


# Influenza Season 2014/2015 – Riverside County, California

## Influenza Surveillance Weekly Update

### Week ending February 21, 2015

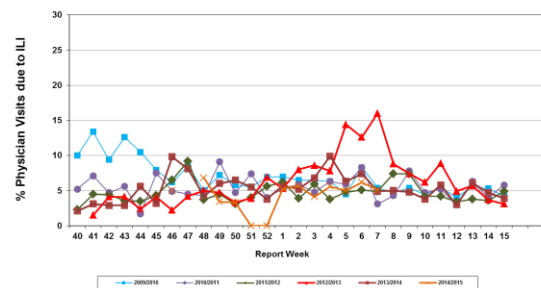
Percent of Emergency Department (ED) Visits due to Influenza-Like Illness (ILI), Riverside County: 2014/2015 Influenza Season



During week 7, 12.6% of visits to Riverside County emergency departments were related to influenza-like illnesses. Compared to historical data, this is within normal limits.

- No data available for weeks 51 and 52

Percent of Total Visits at Physician Sentinel Sites due to Influenza-like Illness (ILI), Riverside County: 2014/2015 Influenza Season



During week 7, 5.1% of visits to physician sentinel sites were related to influenza-like illnesses. Compared to historical data, this is within normal limits.

- No data available for weeks 51 and 52

**Deaths due to Pneumonia and Influenza:** During week 7, 9.2 % of deaths were due, in part, to pneumonia or influenza. Compared to historical data, this is within normal limits.

**School Absenteeism:** During week 7, 12.3% of students at sentinel school sites were absent due to illness. Compared to historical data, this is slightly above normal limits.

**State Influenza Activity:** During week 7, overall influenza activity was “widespread” in California. Based on available data from 118 enrolled sentinel providers, the percentage of visits for ILI in week 7 (3.7%) does not exceed the epidemic threshold for this time of year. Nine influenza-associated deaths in adults less than 65 years of age were reported during Week 7. Twenty laboratory-confirmed influenza outbreaks were reported.

**National Influenza Activity:** During week 7, influenza activity decreased, but remained elevated in the United States. The proportion of outpatient visits for influenza-like illness (ILI) was 3.0%, which is above the national baseline of 2.0%. All 10 regions reported ILI at or above region-specific baseline levels. Puerto Rico and 11 states experienced high ILI activity; three states experienced moderate ILI activity; 16 states experienced low ILI activity; New York City and 20 states experienced minimal ILI activity; and the District of Columbia had insufficient data. The geographic spread of influenza in Guam and 20 states was reported as widespread; Puerto Rico, the U.S. Virgin Islands and 25 states reported regional activity; and the District of Columbia and five state reported local activity. During week 7, 7.4% of all deaths reported through the 122 Cities Mortality Reporting System were due to P&I. This percentage was above the epidemic threshold of 7.2% for week 7. Six influenza-associated pediatric deaths were reported.

#### Additional Resources

Riverside County Influenza Information:  
 State of California Influenza Information:  
 United States Influenza Information:

<http://www.rivco-diseasecontrol.org/Services/InfluenzaInformation.aspx>  
[http://www.cdph.ca.gov/healthinfo/discond/Pages/Influenza\(Flu\).aspx](http://www.cdph.ca.gov/healthinfo/discond/Pages/Influenza(Flu).aspx)  
<http://www.cdc.gov/ncidod/diseases/flu/weekly.htm>

**Epidemiology and Program Evaluation**  
 County of Riverside Department of Public Health  
<http://www.rivcohealthdata.org>  
 (951) 358-5557

