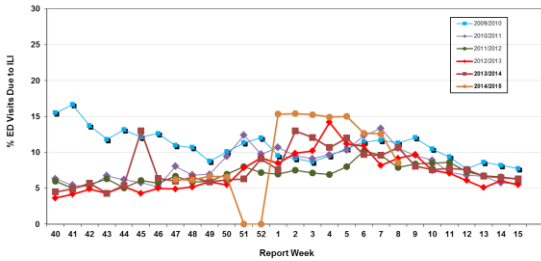


Influenza Season 2014/2015 – Riverside County, California

Influenza Surveillance Weekly Update

Week ending February 28, 2015

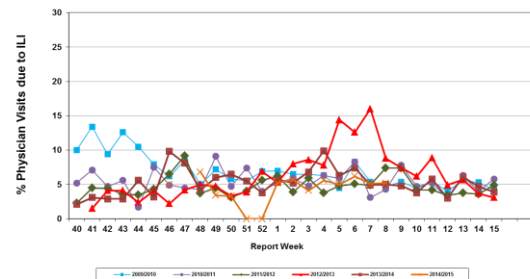
Percent of Emergency Department (ED) Visits due to Influenza-Like Illness (ILI), Riverside County: 2014/2015 Influenza Season



During week 8, 8.5% of visits to Riverside County emergency departments were related to influenza-like illnesses. Compared to historical data, this is within normal limits.

- No data available for weeks 51 and 52

Percent of Total Visits at Physician Sentinel Sites due to Influenza-like Illness (ILI), Riverside County: 2014/2015 Influenza Season



During week 8, 5.2% of visits to physician sentinel sites were related to influenza-like illnesses. Compared to historical data, this is within normal limits.

- No data available for weeks 51 and 52

Deaths due to Pneumonia and Influenza: During week 8, 10.4 % of deaths were due, in part, to pneumonia or influenza. Compared to historical data, this is within normal limits.

School Absenteeism: During week 8, 13.4 % of students at sentinel school sites were absent due to illness. Compared to historical data, this is slightly above normal limits.

State Influenza Activity: During week 7*, overall influenza activity was “widespread” in California. Based on available data from 118 enrolled sentinel providers, the percentage of visits for ILI in week 7* (3.7%) does not exceed the epidemic threshold for this time of year. Nine influenza-associated deaths in adults less than 65 years of age were reported during Week 7*. Twenty laboratory-confirmed influenza outbreaks were reported.

National Influenza Activity: During week 7*, influenza activity decreased, but remained elevated in the United States. The proportion of outpatient visits for influenza-like illness (ILI) was 3.0%, which is above the national baseline of 2.0%. All 10 regions reported ILI at or above region-specific baseline levels. Puerto Rico and 11 states experienced high ILI activity; three states experienced moderate ILI activity; 16 states experienced low ILI activity; New York City and 20 states experienced minimal ILI activity; and the District of Columbia had insufficient data. The geographic spread of influenza in Guam and 20 states was reported as widespread; Puerto Rico, the U.S. Virgin Islands and 25 states reported regional activity; and the District of Columbia and five state reported local activity. During week 7*, 7.4% of all deaths reported through the 122 Cities Mortality Reporting System were due to P&I. This percentage was above the epidemic threshold of 7.2% for week 7*. Six influenza-associated pediatric deaths were reported.

* Reporting delayed one week

Additional Resources

Riverside County Influenza Information:

State of California Influenza Information:

United States Influenza Information:

<http://www.rivco-diseasecontrol.org/Services/InfluenzaInformation.aspx>

[http://www.cdph.ca.gov/healthinfo/discond/Pages/Influenza\(Flu\).aspx](http://www.cdph.ca.gov/healthinfo/discond/Pages/Influenza(Flu).aspx)

<http://www.cdc.gov/ncidod/diseases/flu/weekly.htm>

Epidemiology and Program Evaluation
County of Riverside Department of Public Health

<http://www.rivcohealthdata.org>

(951) 358-5557



Riverside County
Public Health

