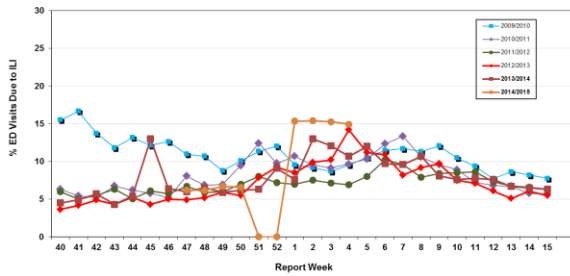


Influenza Season 2014/2015 – Riverside County, California

Influenza Surveillance Weekly Update

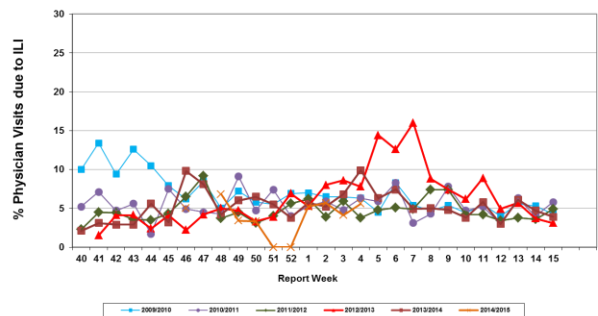
Week ending January 31, 2015

Percent of Emergency Department (ED) Visits due to Influenza-Like Illness (ILI),
Riverside County: 2014/2015 Influenza Season



During week 4, 14.9% of visits to Riverside County emergency departments were related to influenza-like illnesses. Compared to historical data, this is above normal limits.

Percent of Total Visits at Physician Sentinel Sites due to Influenza-like Illness (ILI),
Riverside County: 2014/2015 Influenza Season



During week 4, 5.6% of visits to physician sentinel sites were related to influenza-like illnesses. Compared to historical data, this is within normal limits.

Deaths due to Pneumonia and Influenza: During week 4, 7.0 % of deaths were due, in part, to pneumonia or influenza. Compared to historical data, this is within normal limits.

School Absenteeism: During week 4, 14.8% of students at sentinel school sites were absent due to illness. Compared to historical data, this is significantly above limits.

State Influenza Activity: During week 4, overall influenza activity was “widespread” in California. Based on available data from 107 enrolled sentinel providers, the percentage of visits for ILI in week 4 (4.3%) exceeds the epidemic threshold (3.8%) for this time of year. Nine influenza-associated deaths in adults less than 65 years of age were reported during Week 4. Twenty-four laboratory-confirmed influenza outbreaks were reported.

National Influenza Activity: During week 4, influenza activity continued at elevated levels in the United States. The proportion of outpatient visits for influenza-like illness (ILI) was 4.1%, which is above the national baseline of 2.0%. All 10 regions reported ILI at or above region-specific baseline levels. Puerto Rico and 26 states experienced high ILI activity; New York City and eight states experienced moderate ILI activity; six states experienced low ILI activity; 10 states experienced minimal ILI activity; and the District of Columbia had insufficient data. The geographic spread of influenza in 40 states was reported as widespread; Guam, the U.S. Virgin Islands and nine states reported regional activity; and the District of Columbia and one state reported local activity. During week 4, 8.5% of all deaths reported through the 122 Cities Mortality Reporting System were due to P&I. This percentage was above the epidemic threshold of 7.2% for week 4. Eight influenza-associated pediatric deaths were reported.

Additional Resources

Riverside County Influenza Information:
State of California Influenza Information:
United States Influenza Information:

<http://www.rivco-diseasecontrol.org/Services/InfluenzaInformation.aspx>
[http://www.cdph.ca.gov/healthinfo/discond/Pages/Influenza\(Flu\).aspx](http://www.cdph.ca.gov/healthinfo/discond/Pages/Influenza(Flu).aspx)
<http://www.cdc.gov/ncidod/diseases/flu/weekly.htm>

Epidemiology and Program Evaluation
County of Riverside Department of Public Health
<http://www.rivcohealthdata.org>
(951) 358-5557

