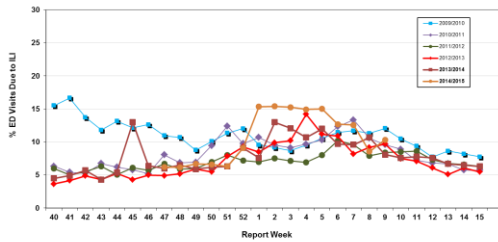


Influenza Season 2014/2015 – Riverside County, California

Influenza Surveillance Weekly Update

Week ending March 7, 2015

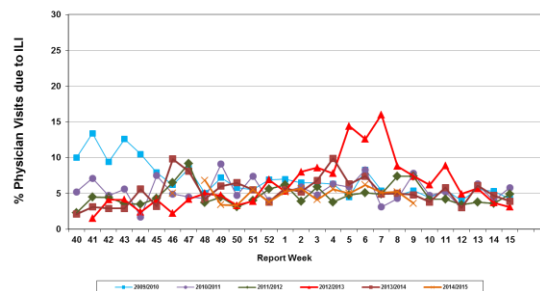
Percent of Emergency Department (ED) Visits due to Influenza-Like Illness (ILI),
Riverside County: 2014/2015 Influenza Season



During week 9, 10.4% of visits to Riverside County emergency departments were related to influenza-like illnesses. Compared to historical data, this is within normal limits.

During week 9, 3.6% of visits to physician sentinel sites were related to influenza-like illnesses. Compared to historical data, this is below normal limits.

Percent of Total Visits at Physician Sentinel Sites due to Influenza-like Illness (ILI),
Riverside County: 2014/2015 Influenza Season



Deaths due to Pneumonia and Influenza: During week 9, 7.3 % of deaths were due, in part, to pneumonia or influenza. Compared to historical data, this is within normal limits.

School Absenteeism: During week 9, 13.6 % of students at sentinel school sites were absent due to illness. Compared to historical data, this is slightly above normal limits.

State Influenza Activity: During week 9, overall influenza activity was “regional” in California. Based on available data from 112 enrolled sentinel providers, the percentage of visits for ILI in week 9 (2.4%) does not exceed the epidemic threshold for this time of year. Five influenza-associated deaths in adults less than 65 years of age were reported during Week 9. Sixteen laboratory-confirmed influenza outbreaks were reported.

National Influenza Activity: During week 9, influenza activity decreased, but remained elevated in the United States. The proportion of outpatient visits for influenza-like illness (ILI) was 2.4%, which is above the national baseline of 2.0%. Eight regions reported ILI at or above region-specific baseline levels. Puerto Rico and six states experienced high ILI activity; one states experienced moderate ILI activity; 13 states experienced low ILI activity; New York City and 30 states experienced minimal ILI activity; and the District of Columbia and one state had insufficient data. The geographic spread of influenza in nine states was reported as widespread; Guam, Puerto Rico, the U.S. Virgin Islands and 29 states reported regional activity; 11 states reported local activity; and the District of Columbia and one state reported sporadic activity. During week 9, 7.6% of all deaths reported through the 122 Cities Mortality Reporting System were due to P&I. This percentage was above the epidemic threshold of 7.2% for week 9. Seven influenza-associated pediatric deaths were reported.

Additional Resources

Riverside County Influenza Information:
State of California Influenza Information:
United States Influenza Information:

<http://www.rivco-diseasecontrol.org/Services/InfluenzaInformation.aspx>
[http://www.cdph.ca.gov/healthinfo/discond/Pages/Influenza\(Flu\).aspx](http://www.cdph.ca.gov/healthinfo/discond/Pages/Influenza(Flu).aspx)
<http://www.cdc.gov/ncidod/diseases/flu/weekly.htm>

Epidemiology and Program Evaluation
County of Riverside Department of Public Health
<http://www.rivcohealthdata.org>
(951) 358-5557

