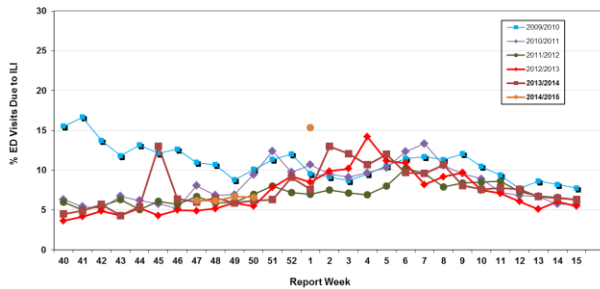


# Influenza Season 2014/2015 – Riverside County, California

## Influenza Surveillance Weekly Update

### Week ending January 10, 2015

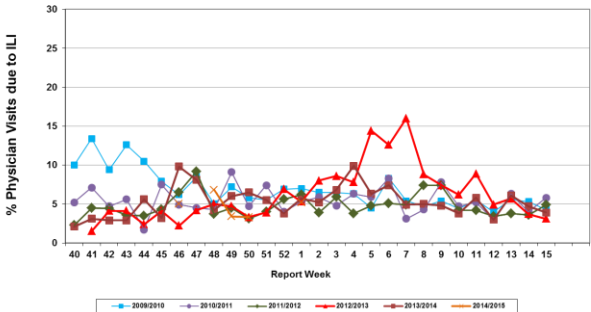
Percent of Emergency Department (ED) Visits due to Influenza-Like Illness (ILI), Riverside County: 2014/2015 Influenza Season



During week 1, 15.4% of visits to Riverside County emergency departments were related to influenza-like illnesses. Compared to historical data, this is above normal limits.

During week 1, 5.2% of visits to physician sentinel sites were related to influenza-like illnesses. Compared to historical data, this is within normal limits.

Percent of Total Visits at Physician Sentinel Sites due to Influenza-like Illness (ILI), Riverside County: 2014/2015 Influenza Season



**Deaths due to Pneumonia and Influenza:** During week 1, 5.8% of deaths were due, in part, to pneumonia or influenza. Compared to historical data, this is below normal limits.

**School Absenteeism:** Insufficient data.

**State Influenza Activity:** During week 53\*, overall influenza activity was “regional” in California. Based on available data from 102 enrolled sentinel providers, the percentage of visits for ILI in week 53\* (4.6%) exceeds the epidemic threshold (3.7%) for this time of year. No influenza-associated deaths in adults less than 65 years of age were reported during Week 53\*. Two laboratory-confirmed influenza outbreaks were reported.

**National Influenza Activity:** During week 53\*, influenza activity continued at elevated levels in the United States. The proportion of outpatient visits for influenza-like illness (ILI) was 5.6%, which is above the national baseline of 2.0%. All 10 regions reported ILI at or above region-specific baseline levels. Puerto Rico and 26 states experienced high ILI activity; New York City and eight states experienced moderate ILI activity; seven states experienced low ILI activity; eight states experienced minimal ILI activity; and the District of Columbia and one state had insufficient data. The geographic spread of influenza in Guam and 46 was reported as widespread; Puerto Rico, the U.S. Virgin Islands and three states reported regional activity; and the District of Columbia and one state reported local activity. During week 53\*, 7.0 % of all deaths reported through the 122-Cities Mortality Reporting System were due to P&I. This percentage was above the epidemic threshold of 6.9% for week 53\*. Five influenza-associated pediatric deaths were reported.

\* Data reporting delayed one week  
 \*\* Data reporting delayed two weeks

**Additional Resources**

- Riverside County Influenza Information: <http://www.rivco-diseasecontrol.org/Services/Influenzainformation.aspx>
- State of California Influenza Information: [http://www.cdph.ca.gov/healthinfo/discond/Pages/Influenza\(Flu\).aspx](http://www.cdph.ca.gov/healthinfo/discond/Pages/Influenza(Flu).aspx)
- United States Influenza Information: <http://www.cdc.gov/ncidod/diseases/flu/weekly.htm>

