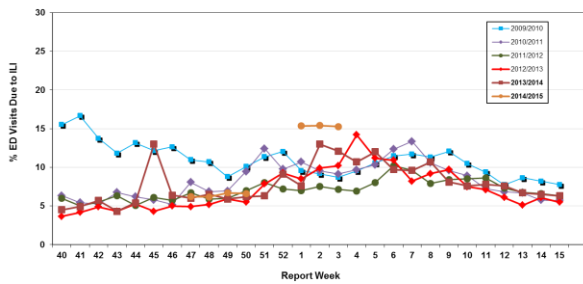


# Influenza Season 2014/2015 – Riverside County, California

## Influenza Surveillance Weekly Update

### Week ending January 24, 2015

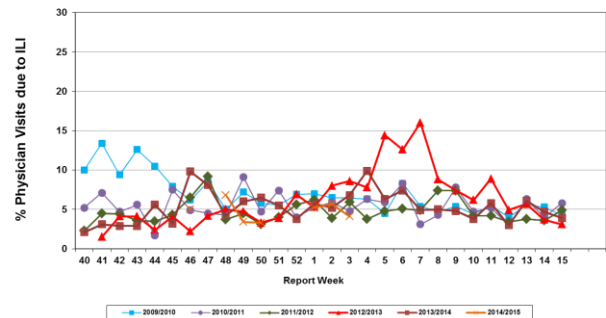
Percent of Emergency Department (ED) Visits due to Influenza-Like Illness (ILI), Riverside County: 2014/2015 Influenza Season



During week 3, 15.3% of visits to Riverside County emergency departments were related to influenza-like illnesses. Compared to historical data, this is above normal limits.

During week 3, 4.1% of visits to physician sentinel sites were related to influenza-like illnesses. Compared to historical data, this is within normal limits.

Percent of Total Visits at Physician Sentinel Sites due to Influenza-like Illness (ILI), Riverside County: 2014/2015 Influenza Season



**Deaths due to Pneumonia and Influenza:** During week 3, 6.6 % of deaths were due, in part, to pneumonia or influenza. Compared to historical data, this is within normal limits.

**School Absenteeism:** During week 3, 15.9% of students at sentinel school sites were absent due to illness. Compared to historical data, this is significantly above limits.

**State Influenza Activity:** During week 2\*, overall influenza activity was “widespread” in California. Based on available data from 80 enrolled sentinel providers, the percentage of visits for ILI in week 2\* (3.8%) exceeds the epidemic threshold (3.7%) for this time of year. Three influenza-associated deaths in adults less than 65 years of age were reported during Week 2\*. Fifteen laboratory-confirmed influenza outbreaks were reported.

**National Influenza Activity:** During week 2\*, influenza activity continued at elevated levels in the United States. The proportion of outpatient visits for influenza-like illness (ILI) was 4.5%, which is above the national baseline of 2.0%. All 10 regions reported ILI at or above region-specific baseline levels. Puerto Rico and 23 states experienced high ILI activity; New York City and 10 states experienced moderate ILI activity; 10 states experienced low ILI activity; seven states experienced minimal ILI activity; and the District of Columbia and one state had insufficient data. The geographic spread of influenza in 44 states was reported as widespread; Guam, Puerto Rico, the U.S. Virgin Islands and five states reported regional activity; and the District of Columbia and one state reported local activity. During week 2\*, 9.3 % of all deaths reported through the 122-Cities Mortality Reporting System were due to P&I. This percentage was above the epidemic threshold of 7.1% for week 2\*. Eleven influenza-associated pediatric deaths were reported.

\* Data reporting delayed one week

#### Additional Resources

Riverside County Influenza Information:  
 State of California Influenza Information:  
 United States Influenza Information:

<http://www.rivco-diseasecontrol.org/Services/InfluenzaInformation.aspx>  
[http://www.cdph.ca.gov/healthinfo/discond/Pages/Influenza\(Flu\).aspx](http://www.cdph.ca.gov/healthinfo/discond/Pages/Influenza(Flu).aspx)  
<http://www.cdc.gov/ncidod/diseases/flu/weekly.htm>

Epidemiology and Program Evaluation  
 County of Riverside Department of Public Health  
<http://www.rivcohealthdata.org>  
 (951) 358-5557

