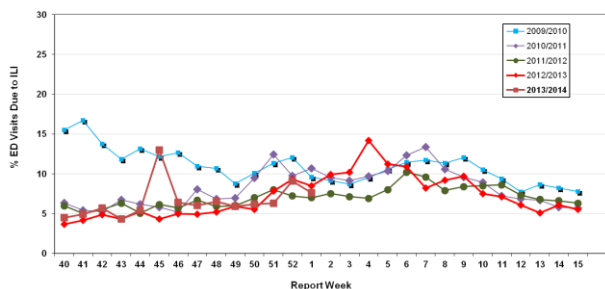


Influenza Season 2013/2014 – Riverside County, California

Influenza Surveillance Weekly Update

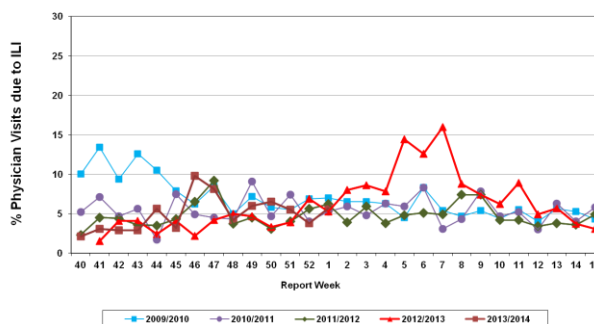
Week ending January 04, 2014

Percent of Emergency Department (ED) Visits due to Influenza-Like Illness (ILI),
Riverside County: 2013/2014 Influenza Season



During week1, 7.6 % of visits to Riverside County emergency departments were related to influenza-like illnesses. Compared to historical data, this is slightly above normal limits.

Percent of Total Visits at Physician Sentinel Sites due to Influenza-like Illness (ILI),
Riverside County: 2013/2014 Influenza Season



During week1, 5.7% of visits to physician sentinel sites were related to influenza-like illnesses. Compared to historical data, this is within normal limits.

Deaths due to Pneumonia and Influenza: During week1, 6.9 % of deaths were due, in part, to pneumonia or influenza. Compared to historical data, this is slightly above normal limits.

School Absenteeism: No data available due to winter break.

State Influenza Activity: During week 52*, overall influenza activity was “regional” in California. Based on available data from 47 out of an average of 127 enrolled sentinel providers, the percentage of visits for ILI in week 51 (3.4%) was below the epidemic threshold (4.1%). No influenza-associated death in adults less than 65 years of age was reported during Week 52. One influenza outbreak was reported no novel influenza cases have been detected in California to date.

* Data reporting delayed one week.

National Influenza Activity: During week 52*, influenza continued to increased in the United States. The proportion of outpatient visits for influenza-like illness (ILI) was 4.3%, above the national baseline of 2.0%. All 10 regions reported ILI at or above region-specific baseline levels. Twenty states experienced high ILI activity, eight states and New York City experienced moderate ILI activity, six states experienced low ILI; 16 states experienced minimal ILI activity and the District of Columbia had insufficient data. The geographic spread of influenza in 25 states was reported as widespread; 20 states reported regional influenza activity; Puerto Rico and three states reported local influenza activity; the District of Columbia, Puerto Rico, and two states reported sporadic influenza activity, and the U.S. Virgin Islands and Guam did not report. During week 52, 6.5 % of all deaths reported through the 122-Cities Mortality Reporting System were due to P&I. This percentage was below the epidemic threshold of 7.0% for week 52. Two influenza-associated pediatric deaths were reported.

* Data reporting delayed one week.

Additional Resources

Riverside County Influenza Information:
State of California Influenza Information:
United States Influenza Information:

<http://www.rivco-diseasecontrol.org/Services/Influenzainformation.aspx>
[http://www.cdph.ca.gov/healthinfo/discond/Pages/Influenza\(Flu\).aspx](http://www.cdph.ca.gov/healthinfo/discond/Pages/Influenza(Flu).aspx)
<http://www.cdc.gov/ncidod/diseases/flu/weekly.htm>

Epidemiology and Program Evaluation
County of Riverside Department of Public Health
<http://www.rivcohealthdata.org>
(951) 358-5557

