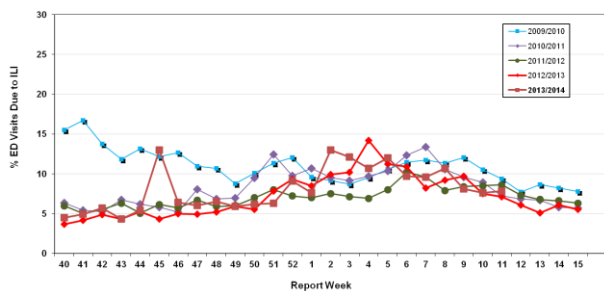


Influenza Season 2013/2014 – Riverside County, California

Influenza Surveillance Weekly Update

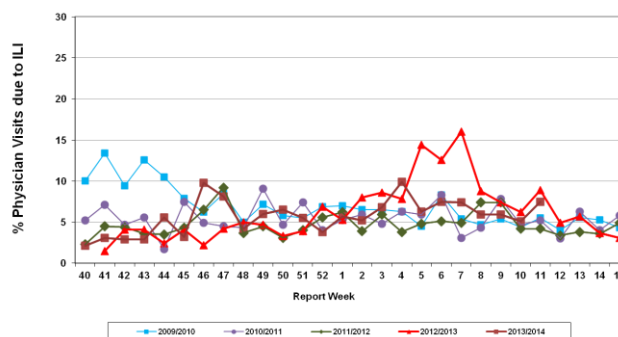
Week ending March 15, 2014

Percent of Emergency Department (ED) Visits due to Influenza-Like Illness (ILI),
Riverside County: 2013/2014 Influenza Season



During week 11, 7.8% of visits to Riverside County emergency departments were related to influenza-like illnesses. Compared to historical data, this is within normal limits.

Percent of Total Visits at Physician Sentinel Sites due to Influenza-like Illness (ILI),
Riverside County: 2013/2014 Influenza Season



During week 11, 7.5% of visits to physician sentinel sites were related to influenza-like illnesses. Compared to historical data, this is within normal limits.

Deaths due to Pneumonia and Influenza: During week 11, 9.6% of deaths were due, in part, to pneumonia or influenza. Compared to historical data, this is within normal limits.

School Absenteeism: No data available.

State Influenza Activity: During week 10*, overall influenza activity was “local” in California. Based on available data from 65 out of an average of 131 enrolled sentinel providers, the percentage of visits for ILI in week 10 (2.8%) was within expected baseline levels for this time of year. Fourteen influenza-associated deaths in adults less than 65 years of age were reported during Week 10. Two influenza outbreaks were reported, no novel influenza cases have been detected in California to date.

* Data reporting delayed one week.

National Influenza Activity: During week 10*, influenza activity continued to decrease in the United States. The proportion of outpatient visits for influenza-like illness (ILI) was 2.0%, which is at the national baseline. Four of 10 regions reported ILI at or above region-specific baseline levels. Two states experienced high ILI activity, six states and New York City experienced low ILI activity, 42 states experienced minimal ILI activity; The District of Columbia had insufficient data. The geographic spread of influenza in four states was reported as widespread; 12 states reported regional influenza activity; the District of Columbia, Guam and 26 states reported local influenza activity; Puerto Rico and 13 states reported sporadic influenza activity, and the U.S. Virgin Islands reported no influenza activity and one state did not report. During week 10, 6.9% of all deaths reported through the 122-Cities Mortality Reporting System were due to P&I. This percentage was above the epidemic threshold of 7.4 % for week 10. Three influenza-associated pediatric deaths were reported.

* Data reporting delayed one week.

Additional Resources

Riverside County Influenza Information:
State of California Influenza Information:
United States Influenza Information:

<http://www.rivco-diseasecontrol.org/Services/InfluenzaInformation.aspx>
[http://www.cdph.ca.gov/healthinfo/discond/Pages/Influenza\(Flu\).aspx](http://www.cdph.ca.gov/healthinfo/discond/Pages/Influenza(Flu).aspx)
<http://www.cdc.gov/ncidod/diseases/flu/weekly.htm>

Epidemiology and Program Evaluation
County of Riverside Department of Public Health
<http://www.rivcohealthdata.org>
(951) 358-5557

