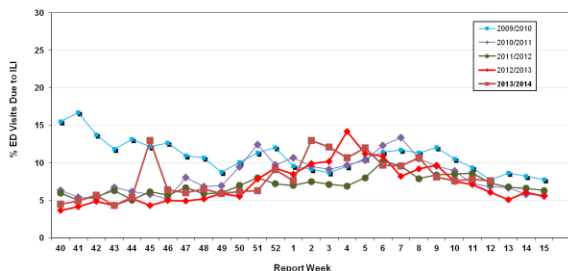


# Influenza Season 2013/2014 – Riverside County, California

## Influenza Surveillance Weekly Update

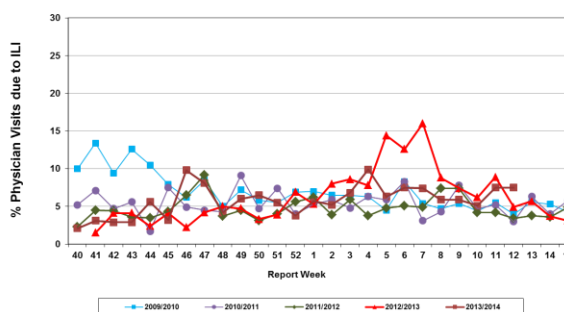
### Week ending March 22, 2014

Percent of Emergency Department (ED) Visits due to Influenza-Like Illness (ILI), Riverside County: 2013/2014 Influenza Season



During week 12, 7.6% of visits to Riverside County emergency departments were related to influenza-like illnesses. Compared to historical data, this is within normal limits.

Percent of Total Visits at Physician Sentinel Sites due to Influenza-like Illness (ILI), Riverside County: 2013/2014 Influenza Season



During week 12, 7.5% of visits to physician sentinel sites were related to influenza-like illnesses. Compared to historical data, this is within normal limits.

**Deaths due to Pneumonia and Influenza:** During week 12, 6.8% of deaths were due, in part, to pneumonia or influenza. Compared to historical data, this is below normal limits.

**School Absenteeism:** No data available.

**State Influenza Activity:** During week 11\*, overall influenza activity was “local” in California. Based on available data from 67 out of an average of 130 enrolled sentinel providers, the percentage of visits for ILI in week 11 (2.2%) was within expected baseline levels for this time of year. Ten influenza-associated deaths in adults less than 65 years of age were reported during Week 11. Five influenza outbreaks were reported, no novel influenza cases have been detected in California to date.

\* Data reporting delayed one week.

**National Influenza Activity:** During week 11\*, influenza activity continued to decrease in the United States. The proportion of outpatient visits for influenza-like illness (ILI) was 1.7%, which is below the national baseline of 2.0%. Four of 10 regions reported ILI at or above region-specific baseline levels. One state experienced moderate ILI activity; two states and New York City experienced low ILI activity; 47 states experienced minimal ILI activity and the District of Columbia had insufficient data. The geographic spread of influenza in four states was reported as widespread; nine states reported regional influenza activity; the District of Columbia and 19 states reported local influenza activity; Puerto Rico, Guam and 18 states reported sporadic influenza activity, and the U.S. Virgin Islands reported no influenza activity. During week 11, 7.1% of all deaths reported through the 122-Cities Mortality Reporting System were due to P&I. This percentage was below the epidemic threshold of 7.4 % for week 11. Seven influenza-associated pediatric deaths were reported.

\* Data reporting delayed one week.

#### Additional Resources

Riverside County Influenza Information:  
 State of California Influenza Information:  
 United States Influenza Information:

<http://www.rivco-diseasecontrol.org/Services/InfluenzaInformation.aspx>  
[http://www.cdph.ca.gov/healthinfo/discond/Pages/Influenza\(Flu\).aspx](http://www.cdph.ca.gov/healthinfo/discond/Pages/Influenza(Flu).aspx)  
<http://www.cdc.gov/ncidod/diseases/flu/weekly.htm>

**Epidemiology and Program Evaluation**  
**County of Riverside Department of Public Health**  
<http://www.rivcohealthdata.org>  
 (951) 358-5557

