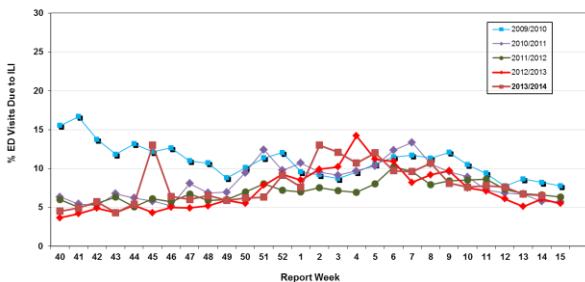


# Influenza Season 2013/2014 – Riverside County, California

## Influenza Surveillance Weekly Update

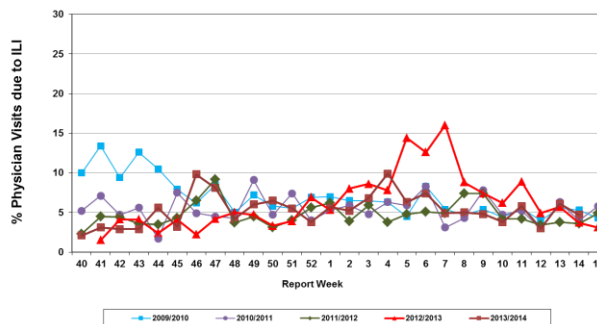
### Week ending April 5, 2014

Percent of Emergency Department (ED) Visits due to Influenza-Like Illness (ILI), Riverside County: 2013/2014 Influenza Season



During week 14, 6.5% of visits to Riverside County emergency departments were related to influenza-like illnesses. Compared to historical data, this is within normal limits.

Percent of Total Visits at Physician Sentinel Sites due to Influenza-like Illness (ILI), Riverside County: 2013/2014 Influenza Season



During week 14, 4.7 % of visits to physician sentinel sites were related to influenza-like illnesses. Compared to historical data, this is within normal limits.

**Deaths due to Pneumonia and Influenza:** During week 14, 9.2 % of deaths were due, in part, to pneumonia or influenza. Compared to historical data, this is above normal limits.

**School Absenteeism:** No data available.

**State Influenza Activity:** No data available.

**National Influenza Activity:** During week 13\*, influenza activity continued to decrease in most regions of the United States. The proportion of outpatient visits for influenza-like illness (ILI) was 1.6%, which is below the national baseline of 2.0%. Two of 10 regions reported ILI at or above region-specific baseline levels. New York City experienced high ILI activity; two states experienced moderate ILI activity; three states experienced low ILI activity; 45 states experienced minimal ILI activity, and the District of Columbia had insufficient data. The geographic spread of influenza in five states was reported as widespread; Guam and four states reported regional influenza activity; the District of Columbia and 17 states reported local influenza activity; Puerto Rico and 23 states reported sporadic influenza activity; one state reported no influenza activity and the U.S. Virgin Islands did not report. During week 13, 6.5 % of all deaths reported through the 122-Cities Mortality Reporting System were due to P&I. This percentage was below the epidemic threshold of 7.3 % for week 13. Four influenza-associated pediatric deaths were reported.

\* Data reporting delayed one week.

#### Additional Resources

Riverside County Influenza Information:  
 State of California Influenza Information:  
 United States Influenza Information:

<http://www.rivco-diseasecontrol.org/Services/InfluenzaInformation.aspx>  
[http://www.cdph.ca.gov/healthinfo/discond/Pages/Influenza\(Flu\).aspx](http://www.cdph.ca.gov/healthinfo/discond/Pages/Influenza(Flu).aspx)  
<http://www.cdc.gov/ncidod/diseases/flu/weekly.htm>

**Epidemiology and Program Evaluation**  
**County of Riverside Department of Public Health**  
<http://www.rivcohealthdata.org>  
 (951) 358-5557

