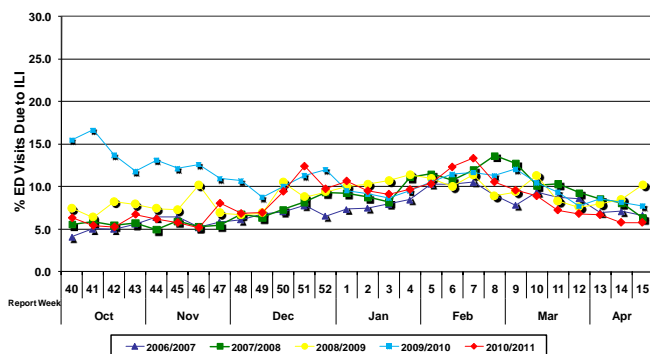


# Influenza Season 2010/2011 – Riverside County, California

## Influenza Surveillance Weekly Update

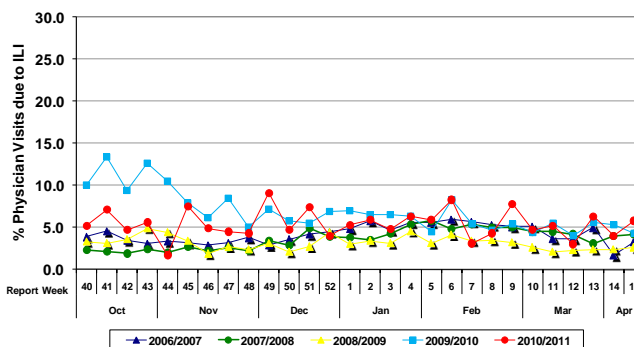
### Week ending April 16, 2011

**Percent of Emergency Department (ED) Visits due to Influenza-Like Illness (ILI), Riverside County: 2010/2011 Influenza Season**



During week 15, 5.8% of visits to Riverside County emergency departments were related to influenza-like illnesses. Compared to historical data, this is below normal limits.

**Percent of Total Visits at Physician Sentinel Sites due to Influenza-like Illness (ILI), Riverside County: 2010/2011 Influenza Season**



During week 15, 5.8% of visits to physician sentinel sites were related to influenza-like illnesses. Compared to historical data, this is slightly above normal limits.

**Deaths due to Pneumonia and Influenza:** During week 15, 5.6% of deaths were due, in part, to pneumonia or influenza. Compared to historical data, this is within normal limits.

**School Absenteeism:** During week 15, 11.6% of students at sentinel school sites were absent due to illness. Compared to historical data, this remains above normal limits.

**State Influenza Activity:** During week 14\*, the California Department of Public Health (CDPH) received 18 reports of laboratory-confirmed influenza patients under age 65 who were admitted to the ICU, with 4 fatalities. Since Week 40, 288 non-fatal severe cases (defined as ICU admission) and 45 fatal cases have been reported. Influenza-like illness (ILI) related visits at sentinel providers decreased by 1.4% in Week 14 compared to the previous week. Overall influenza activity in California for week 14 was downgraded to "local".

\* Data reporting delayed one week.

**National Influenza Activity:** During week 14\*, U.S. influenza activity continued to decrease. The proportion of deaths attributed to pneumonia and influenza (P&I) was at or above the epidemic threshold for the eleventh consecutive week. One influenza-associated pediatric death was reported for a season total of 91. The proportion of outpatient visits for influenza-like illness (ILI) was below the national baseline of 2.5%. All 10 regions reported ILI below region-specific baseline levels. Two states experienced low ILI activity; 48 states and New York City experienced minimal ILI activity, and the District of Columbia had insufficient data to calculate an ILI activity level.

\* Data reporting delayed one week.

#### Additional Resources

Riverside County Influenza Information:  
 State of California Influenza Information:  
 United States Influenza Information:

<http://www.rivco-diseasecontrol.org/SeasonalInfluenza/>  
<http://www.dhs.ca.gov/ps/dcdc/vrdl/html/flu/fluintro.htm>  
<http://www.cdc.gov/ncidod/diseases/flu/weekly.htm>

**Epidemiology and Program Evaluation (951) 358-5557**  
**Department of Public Health / Riverside County Community Health Agency**  
<http://www.rivcohealthdata.org>

