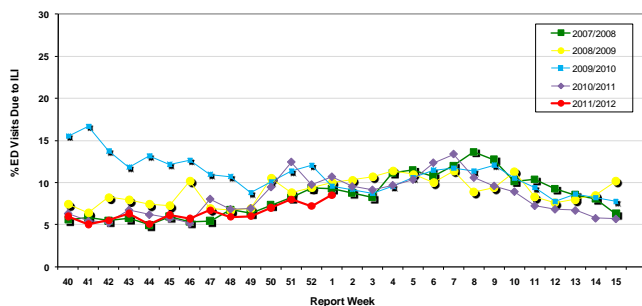


# Influenza Season 2010/2011 – Riverside County, California

## Influenza Surveillance Weekly Update

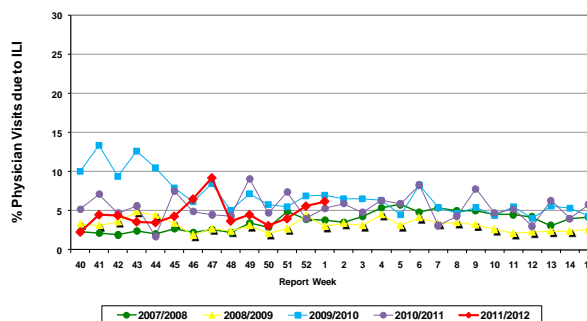
### Week ending January 7, 2011

Percent of Emergency Department (ED) Visits due to Influenza-Like Illness (ILI), Riverside County: 2011/2012 Influenza Season



During week 1, 8.5% of visits to Riverside County emergency departments were related to influenza-like illnesses. Compared to historical data, this is within normal limits.

Percent of Total Visits at Physician Sentinel Sites due to Influenza-like Illness (ILI), Riverside County: 2011/2012 Influenza Season



During week 1, 6.2% of visits to physician sentinel sites were related to influenza-like illnesses. Compared to historical data, this is within normal limits.

**Deaths due to Pneumonia and Influenza:** During week 1, 7.3% of deaths were due, in part, to pneumonia or influenza. Compared to historical data, this is within normal limits.

**School Absenteeism:** Winter Recess. No data to report.

**California Influenza Activity:** During weeks 51 and 52\*, overall influenza activity in California remained “sporadic”. Outpatient influenza-like illness (ILI) activity as a percentage of total visits to sentinel providers was low during weeks 51 and 52. The California Department of Public Health received no reports of laboratory-confirmed influenza deaths in patients under age 65.

\* Data reporting delayed one week.

**National Influenza Activity:** During week 52\*, influenza activity increased in the United States, but remained relatively low. The proportion of outpatient visits for influenza-like illness (ILI) was 1.7%, which is below the national baseline of 2.4%. Three of the 10 regions (Regions 1, 5, and 10) reported ILI at or above region-specific baseline levels. One state experienced moderate ILI activity, New York City and six states experienced low ILI activity, 42 states experienced minimal ILI activity, and the District of Columbia and one state had insufficient data. During week 52, 7.0% of all deaths reported through the 122-Cities Mortality Reporting System were due to P&I. This percentage was below the epidemic threshold of 7.5% for week 52. No influenza-associated pediatric deaths were reported. The geographic spread of influenza in one state was reported as regional; four states reported local activity; Guam and 40 states reported sporadic activity; the District of Columbia, the U.S. Virgin Islands and five states reported no influenza activity, and Puerto Rico did not report.

\* Data reporting delayed one week.

**Additional Resources**

Riverside County Influenza Information:  
 State of California Influenza Information:  
 United States Influenza Information:

<http://www.rivco-diseasecontrol.org/SeasonalInfluenza/>  
<http://www.dhs.ca.gov/ps/dcdc/vrdl/html/flu/fluintro.htm>  
<http://www.cdc.gov/ncidod/diseases/flu/weekly.htm>

**Epidemiology and Program Evaluation**  
**Department of Public Health**  
**Riverside County Community Health Agency**  
<http://www.rivcohealthdata.org>

