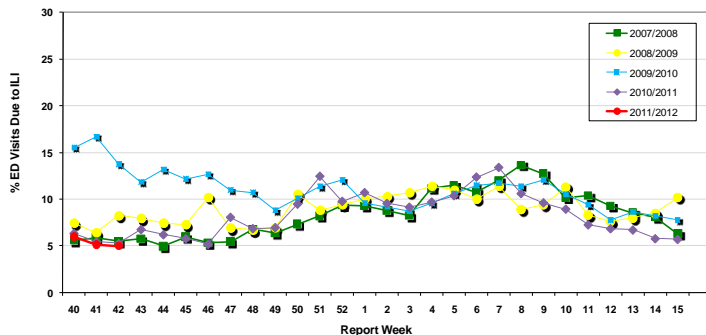


Influenza Season 2010/2011 – Riverside County, California

Influenza Surveillance Weekly Update

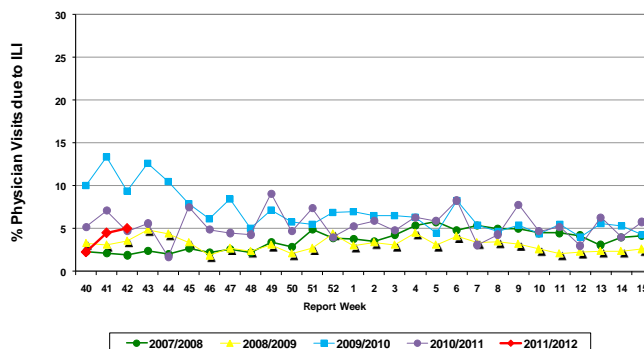
Week ending October 22, 2011

Percent of Emergency Department (ED) Visits due to Influenza-Like Illness (ILI),
Riverside County: 2011/2012 Influenza Season



During week 42, 5.0% of visits to Riverside County emergency departments were related to influenza-like illnesses. Compared to historical data, this is slightly below normal limits.

Percent of Total Visits at Physician Sentinel Sites due to Influenza-like Illness (ILI),
Riverside County: 2011/2012 Influenza Season



During week 42, 5.0% of visits to physician sentinel sites were related to influenza-like illnesses. Compared to historical data, this is within normal limits.

Deaths due to Pneumonia and Influenza: During week 42, 5.6% of deaths were due, in part, to pneumonia or influenza. Compared to historical data, this is within normal limits.

School Absenteeism: During week 42, 7.4% of students at sentinel school sites were absent due to illness. Compared to historical data, this is above normal limits.

State Influenza Activity: During weeks 40 and 41*, overall influenza activity in California was “sporadic”. The California Department of Public Health (CDPH) has received no reports of laboratory-confirmed influenza deaths in patients under age 65.

* Data reporting delayed one week.

National Influenza Activity: During week 41*, influenza activity across the US remained low. The proportion of outpatient visits for influenza-like illness (ILI) was 1.0%, below the national baseline of 2.4%. The proportion of deaths attributed to pneumonia and influenza (P&I) was below the epidemic threshold of 6.6% during week 41, with 6.0% of all deaths reported through the 122-Cities Mortality Reporting System were due to P&I. No influenza-associated pediatric deaths were reported during week 40. The geographic spread of influenza in the District of Columbia, Guam, Puerto Rico, the U.S. Virgin Islands, and 18 states was reported as sporadic and 32 states reported no influenza activity.

* Data reporting delayed one week.

Additional Resources

Riverside County Influenza Information:
State of California Influenza Information:
United States Influenza Information:

<http://www.rivco-diseasecontrol.org/SeasonalInfluenza/>
<http://www.dhs.ca.gov/ps/dccdc/vrdl/html/flu/fluintro.htm>
<http://www.cdc.gov/ncidod/diseases/flu/weekly.htm>

Epidemiology and Program Evaluation (951) 358-5557
Department of Public Health / Riverside County Community Health Agency
<http://www.rivcohealthdata.org>

