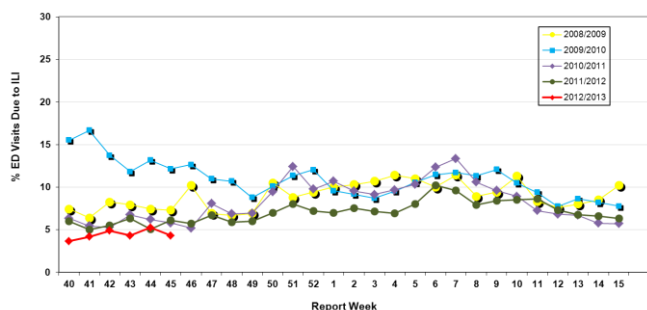


Influenza Season 2012/2013 – Riverside County, California

Influenza Surveillance Weekly Update

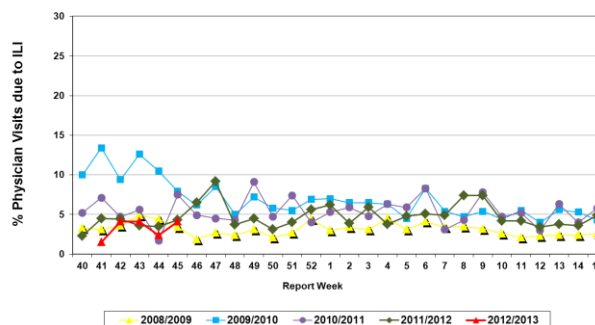
Week ending November 10, 2012

Percent of Emergency Department (ED) Visits
due to Influenza-Like Illness (ILI),
Riverside County: 2012/2013 Influenza Season



During week 45, 4.3% of visits to Riverside County emergency departments were related to influenza-like illnesses. Compared to historical data, this is within normal limits.

Percent of Total Visits at Physician Sentinel Sites
due to Influenza-like Illness (ILI),
Riverside County: 2012/2013 Influenza Season



During week 45, 4.1% of visits to physician sentinel sites were related to influenza-like illnesses. Compared to historical data, this is within normal limits.

Deaths due to Pneumonia and Influenza: No report available this week.

School Absenteeism: During week 44, 10.6% of students at sentinel school sites were absent due to illness. Compared to historical data, this is within normal limits. Please note that only 30% of schools reported this week.

State Influenza Activity: During week 43*, overall influenza activity in California was “sporadic”. Outpatient influenza-like illness (ILI) decreased 0.3% in Week 44 (1.1%) compared to Week 43 (1.4%). The California Department of Public Health received no reports of laboratory-confirmed influenza deaths in patients under age 65. * Data reporting delayed one week.

National Influenza Activity: During week 44*, influenza activity increased in some areas, but overall was similar to activity last week in the United States. The proportion of outpatient visits for influenza-like illness (ILI) was 1.3%, which is below the national baseline of 2.2%. All 10 regions reported ILI below region-specific baseline levels. During week 44, 6.6% of all deaths reported through the 122-Cities Mortality Reporting System were due to P&I. This percentage was slightly above the epidemic threshold of 6.5% for week 44. No influenza-associated pediatric deaths were reported during week 44. The geographic spread of influenza in 1 state was reported as regional; 8 states reported local activity; the District of Columbia and 33 states reported sporadic activity; Guam and 8 states reported no influenza activity, and Puerto Rico and the U.S. Virgin Islands did not report. * Data reporting delayed one week.

Additional Resources

Riverside County Influenza Information:
State of California Influenza Information:
United States Influenza Information:

<http://www.rivco-diseasecontrol.org/SeasonalInfluenza/>
[http://www.cdph.ca.gov/healthinfo/discond/Pages/Influenza\(Flu\).aspx](http://www.cdph.ca.gov/healthinfo/discond/Pages/Influenza(Flu).aspx)
<http://www.cdc.gov/ncidod/diseases/flu/weekly.htm>

Epidemiology and Program Evaluation
County of Riverside Department of Public Health
<http://www.rivcohealthdata.org>
(951) 358-5557

