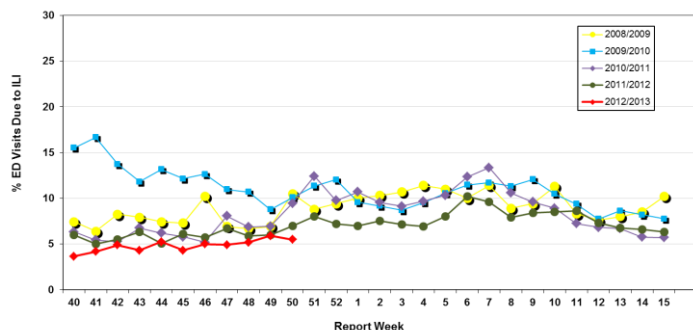


Influenza Season 2012/2013 – Riverside County, California

Influenza Surveillance Weekly Update

Week ending December 15, 2012

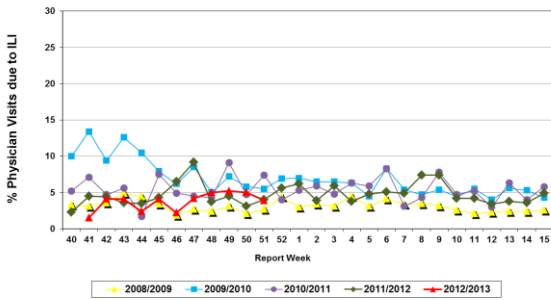
Percent of Emergency Department (ED) Visits due to Influenza-Like Illness (ILI),
Riverside County: 2012/2013 Influenza Season



During week 50, 5.5% of visits to Riverside County emergency departments were related to influenza-like illnesses. Compared to historical data, this is low but within normal limits.

During week 50, 3.9% of visits to physician sentinel sites were related to influenza-like illnesses. Compared to historical data, this is within normal limits.

Percent of Total Visits at Physician Sentinel Sites due to Influenza-like Illness (ILI),
Riverside County: 2012/2013 Influenza Season



Deaths due to Pneumonia and Influenza: During week 50, 8.1% of deaths were due, in part, to pneumonia or influenza. Compared to historical data, this is within normal limits.

School Absenteeism: During week 50, 16.1% of students at sentinel school sites were absent due to illness. Compared to historical data, this is above normal limits.

State Influenza Activity: During week 49*, overall influenza activity in California remained “sporadic”. Outpatient influenza-like illness (ILI) increased 0.2% in Week 49 (2.8%) compared to Week 48 (2.6%). The California Department of Public Health received one report of a laboratory-confirmed influenza death in a patient under age 65 and no novel influenza cases have been detected in California to date.

* Data reporting delayed one week.

National Influenza Activity: During week 49*, influenza activity increased in the United States. The proportion of outpatient visits for influenza-like illness (ILI) was 2.8%, which is above the national baseline of 2.2%. Seven of ten regions reported ILI above region-specific baseline levels. The geographic spread of influenza in 18 states was reported as widespread; 17 states reported regional activity; the District of Columbia and 11 states reported local activity; Guam and 4 states reported sporadic activity, and Puerto Rico and the U.S. Virgin Islands did not report. One human infection with a novel influenza A virus was reported. During week 49, 6.4% of all deaths reported through the 122 Cities Mortality Reporting System were due to P&I. This percentage was below the epidemic threshold of 6.9% for week 49. One influenza-associated pediatric death was reported during week 49.

* Data reporting delayed one week.

Additional Resources

- Riverside County Influenza Information: <http://www.rivco-diseasecontrol.org/SeasonalInfluenza/>
- State of California Influenza Information: [http://www.cdph.ca.gov/healthinfo/discond/Pages/Influenza\(Flu\).aspx](http://www.cdph.ca.gov/healthinfo/discond/Pages/Influenza(Flu).aspx)
- United States Influenza Information: <http://www.cdc.gov/ncidod/diseases/flu/weekly.htm>

Epidemiology and Program Evaluation
County of Riverside Department of Public Health
<http://www.rivcohealthdata.org>
 (951) 358-5557

