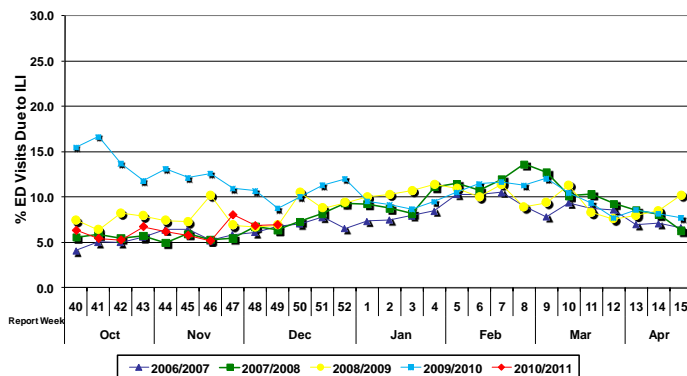


Influenza Season 2010/2011 – Riverside County, California

Influenza Surveillance Weekly Update

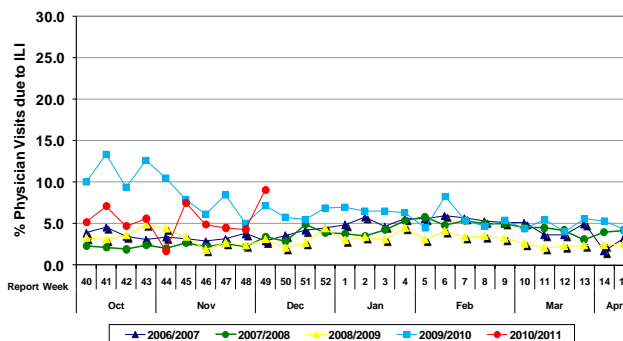
Week ending December 11, 2010

Percent of Emergency Department (ED) Visits due to Influenza-Like Illness (ILI), Riverside County: 2010/2011 Influenza Season



During week 49, 6.9 percent of visits to Riverside County emergency departments were related to influenza-like illnesses. Compared to historical data, this is within normal limits.

Percent of Total Visits at Physician Sentinel Sites due to Influenza-like Illness (ILI), Riverside County: 2010/2011 Influenza Season



During week 49, 9.1 percent of visits to physician sentinel sites were related to influenza-like illnesses. Compared to historical data, this is above normal limits.

Deaths due to Pneumonia and Influenza: During week 49, 7.4 percent of deaths were due, in part, to pneumonia/influenza. Compared to historical data, this above within normal limits.

School Absenteeism: As of week 49, 18.6%* of students at sentinel school sites were absent due to illness. Compared to historical data, this is above normal limits. * Data from schools who specifically report absence due to illness.

State Influenza Activity: In week 48*, the California Department of Public Health (CDPH) received three reports of laboratory-confirmed influenza patients under age 65 who were admitted to the ICU. Since Week 40, seven non-fatal severe cases (defined as ICU admission or death) have been reported; four have been in pediatric patients under 18 years of age. Reports of influenza-like illness (ILI) from sentinel providers saw an overall increase in week 48 compared to the previous week. The overall influenza activity in California remained “minimal”. * Data reporting delayed one week.

National Influenza Activity: During week 48*, influenza activity remained low in the U.S. The proportion of deaths attributed to pneumonia and influenza (P&I) was below the epidemic threshold. No influenza-associated pediatric deaths were reported. The proportion of outpatient visits for influenza-like illness (ILI) was below the national baseline. All 10 regions reported ILI below region-specific baseline levels; one state (Georgia) and New York City experienced low ILI activity and the District of Columbia and 49 states experienced minimal ILI activity. *Data reporting delayed one week.

Additional Resources

Riverside County Influenza Information:
 State of California Influenza Information:
 United States Influenza Information:

<http://www.rivco-diseasecontrol.org/SeasonalInfluenza/>
<http://www.dhs.ca.gov/ps/dcdc/vrdl/html/flu/fluintro.htm>
<http://www.cdc.gov/ncidod/diseases/flu/weekly.htm>

Danyte S. Mockus, PhD, MPH
Epidemiology and Program Evaluation (951) 358-5557
Department of Public Health / Riverside County Community Health Agency
<http://www.rivcohealthdata.org>

