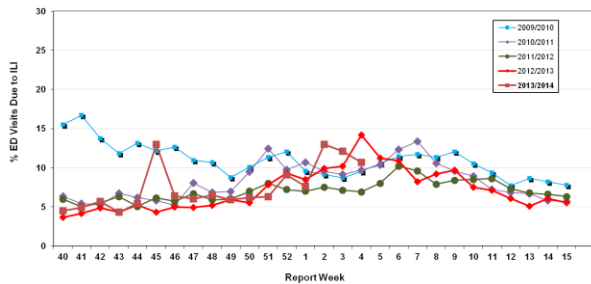


Influenza Season 2013/2014 – Riverside County, California

Influenza Surveillance Weekly Update

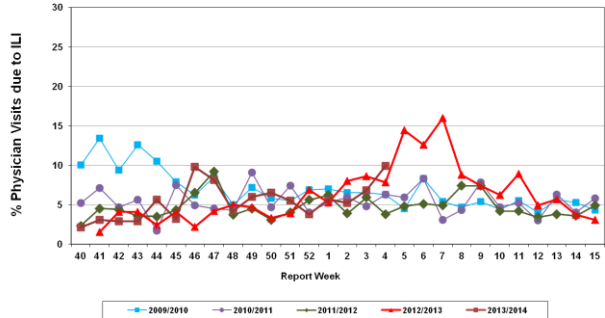
Week ending January 25, 2014

Percent of Emergency Department (ED) Visits due to Influenza-Like Illness (ILI),
Riverside County: 2013/2014 Influenza Season



During week 4, 10.7% of visits to Riverside County emergency departments were related to influenza-like illnesses. Compared to historical data, this is above normal limits.

Percent of Total Visits at Physician Sentinel Sites due to Influenza-like Illness (ILI),
Riverside County: 2013/2014 Influenza Season



During week 4, 9.9 % of visits to physician sentinel sites were related to influenza-like illnesses. Compared to historical data, this is above normal limits.

Deaths due to Pneumonia and Influenza: During week 4, 9.5% of deaths were due, in part, to pneumonia or influenza. Compared to historical data, this is above normal limits.

School Absenteeism: During week 4, 9.8% of students at sentinel school sites were absent due to illness. Compared to historical data, this is within normal limits.

State Influenza Activity: During week 3*, overall influenza activity was “widespread” in California. Based on available data from 83 out of an average of 131 enrolled sentinel providers, the percentage of visits for ILI in week 3 (4.3%) was above the epidemic threshold (4.2%). Fifty influenza-associated deaths in adults less than 65 years of age were reported during Week1. Five influenza outbreaks were reported, no novel influenza cases have been detected in California to date.
* Data reporting delayed one week.

National Influenza Activity: During week 3*, influenza activity remained high in the United States. The proportion of outpatient visits for influenza-like illness (ILI) was 3.4 %, above the national baseline of 2.0%. All 10 regions reported ILI above region-specific baseline levels. Thirteen states experienced high ILI activity, 7 states and New York experienced moderate ILI activity, 15 states experienced low ILI activity; 15 states experienced minimal ILI activity and the District of Columbia had insufficient data. The geographic spread of influenza in 41 states was reported as widespread; 8 states and Puerto Rico reported regional influenza activity; the District of Columbia reported local influenza activity; one state and Guam reported sporadic influenza activity, and the U.S. Virgin Islands did not report. During week 3, 8.1% of all deaths reported through the 122-Cities Mortality Reporting System were due to P&I. This percentage was above the epidemic threshold of 7.2% for week 3. Eight influenza-associated pediatric deaths were reported.
* Data reporting delayed one week.

Additional Resources

- Riverside County Influenza Information: <http://www.rivco-diseasecontrol.org/Services/InfluenzaInformation.aspx>
- State of California Influenza Information: [http://www.cdph.ca.gov/healthinfo/discond/Pages/Influenza\(Flu\).aspx](http://www.cdph.ca.gov/healthinfo/discond/Pages/Influenza(Flu).aspx)
- United States Influenza Information: <http://www.cdc.gov/ncidod/diseases/flu/weekly.htm>

Epidemiology and Program Evaluation
County of Riverside Department of Public Health
<http://www.rivcohealthdata.org>
 (951) 358-5557

